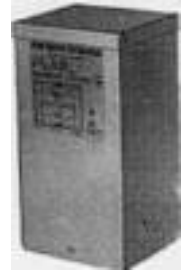


## TRANSFORMERS

Single Phase  
Dry Type Power Circuit Distribution  
600V To 120/240V, 60 Hz



### No Taps

					Approx.			
					Dim. Dry Type Power Circuit Distribution Transformers			
Acme	General	Magnetek/ Jefferson	Sorgel	Westing- house	kVA	H	W	D
Electric	Electric	240-701	50SV51A	.....	.050	5½	3%	2¾
T-53105	9T51B82	220-026	100SV51A	.....	.10	6½	3%	2¾
T-53106	9T51B84	220-036	150SV51A	.....	.15	6½	3%	2¾
T-2-53107-S	9T51B85	211-046	250SV51B	.....	.25	7	4½	3½
T-2-53108-S	9T51B87	211-056	500SV51B	.....	.50	5½	3%	2¾
T-2-53109-S	9T51B88	211-066	750SV51F	.....	.75	3¼	3%	2¾
T-2-53110-S	9T51B89	.....	1S51F	.....	1.0	9%	8%	5%
T-2-53111-S	9T51B90	.....	1.5S51F	.....	1.5	10½	9%	6½
T-2-53112-S	9T51B91	.....	2S51F	.....	2.0	10½	9%	6½
	9T51B92		S60N11S03N	.....	3.0	12¼	10%	7
	9T51B93		S60N11S05N	.....	5.0	17	13¾	8%
	9T21B1016G2		S60N11S07N	.....	7.5	17	13¾	8%
	9T21B1017G2		S60G11S10N	.....	10.0	.....	.....	.....
	9T21B1018G2		S60N11S15N	.....	15.0	25	18	15
	9T21B9111							

### 2-5% FCBN

					Approx.			
					Dim., In.			
Acme	General	Hevi- Duty	Siemens/ I-T-E	Square D Sorgel	Westing- house	kVA	H	D
Electric	Electric	HS10F1A	.....	.....	S60G11S01N	1.0	9%	5%
T-2-53113-1S	9T51B70	HS10F1.5A	.....	.....	S60G11S16N	1.5	10½	6½
T-2-53114-1S	9T51B71	HS10F2A	.....	.....	S60G11S02N	2.0	10½	6½
T-2-53615-1S	9T51B72	HS10F3A	.....	3S4F	S60G11S03N	3.0	12¼	7
T-2-53616-1S	9T51B73	HS10F5A	1G1R003	5S4F	S60G11S05N	5.0	17	8%
T-2-53616-1S	9T21B1019G2	HS10F7.5A	1G1R005	7S4F	S60G11S07N	7.5	17	8%
T-2-53617-1S	9T21B1020G2	HS10F10A	1G1R007	10S4F	S60G11S10N	10.0	17	8%
T-2-53618-1S	9T21B1021G2	HS10F15A	1G1R010	.....	.....	15.0	25	12
	9T21B9113	HS10F25A	1G1R015	.....	.....	25.0	28	15
	9T21B9114							

### 2-2½% FCAN & 4-2½% FCBN

No.					kVA
Acme	General	Magnetek/ Jefferson*	Westinghouse*		kVA
Electric*	Electric*	221-3188	T60M11S25A		25.0
T-1-53119-3S	9T23B2681	221-3208	T60M11S37C		37.5
T-1-53120-3S	9T23B2682	221-3228	T60M11S50D		50.0
T-1-53121-3S	9T23B2683	221-3238	T60M11S75D		75.0
T-1-53122-3S	9T23B2684	221-3248	T60M11S99B		100.0
T-1-53123-3S	9T23B2685				167.0
	9T23B2686				

\*Ventilated.

### 4-2½% FCBN

No.					kVA
Hevi-Duty	Magnetek/ Jefferson	Square D Sorgett†	Square D Sorgel	Westinghouse	kVA
S10H15	211-167	15S5H	15S5HNV	S60J11S15N	15.0
S10H25†	211-187	25S5H	25S5HNV	S60J11S25N	25.0
S10H37†		37S5H	37S5HNV		37.5
S10H50†		50S5H	50S5HNV		50.0
S10H75†		75S5H	75S5HNV		75.0
S10H100†		100S5H	100S5HNV		100.0
S10H167†		167S5H			167.0

†Ventilated.



**TRANSFORMERS**  
**Three Phase**  
**Dry Type Power Circuit Distribution**  
**480V Delta To 208Y/120V**



Acme Electric	General Electric	Hevi-Duty	No.				Westing- house	kVA	Approx. Transformer Dim., In.		
			Magnetek/ Jefferson	Siemens/ I-T-E	Square D Sorgel	2-5% FCBN			H	W	D
	9T21A4004	HT1F3A	213-104	3F3R003ST	3T2F	Y48G28T03N	3.0	13	15½	7½	
	9T21A4005	HT1F6A	213-124	3F3R006ST	6T2F	Y48G28T06N	6.0	13	15½	7½	
	9T21A4006	.....	213-144	3F3R009ST	9T2F	Y48G28T09N	9.0	17	20	10¼	
	9T21A9302	HT1F15A	213-164	3F3R015	15T2F	Y48G28T15N	15.0	25	20	-12	
				2-2½% & 4-2½% FCBN							
	9T23B3871*	T2H15*		3F3Y015ST*	15T3H*	V48M28T15B*	15.0	25	20	12	
.....	.....	T2H25*	.....	.....	.....	.....	25.0	28	23	15	
T-1A-53393-3S	9T23B3872*	T2H30*	223-3194*	3F3Y030ST*	30T3H*	V48M28T30K*	30.0	28	23	15	
T-1A-53312-3S	.....	T2H37*	223-3204*	3F3Y037*	.....	V48M28T37K*	37.5	19	30	11¾	
T-1A-53394-3S	9T23B3873*	T2H45*	223-3214*	3F3Y045ST*	45T3H*	V48M28T45K*	45.0	19	30	11¾	
T-1A-53313-3S	9T23B3864*	T2H50*	223-3224*	3F3Y050*	.....	V48M28T50J*	50.0	34	28	19	
T-1A-53403-3S	9T23B3874*	T2H75*	223-3234*	3F3Y075ST*	75T3H*	V48M28T75J*	75.0	34	28	19	
T-1A-53314-3S	9T23B3875*	T2H112*	223-3254*	3F3Y112ST*	112T3H*	V48M28T12H*	112.5	44	33	21	
T-1A-53315-3S	9T23B3876*	T2H150*	223-3264*	3F3Y150ST*	150T3H*	V48M28T49K*	150.0	44	33	21	
T-1-53317-3S	9T23B3877*	T2H225*	223-3294*	3F3Y225ST*	225T3H*	V48M28T22L*	225.0	46	36	24	
T-1-53316-3S	9T23B3878*	T2H300*	223-3314*	3F3Y300ST*	300T3H*	V48M28T33K*	300.0	46	36	24	
T-1-53318-3S	9T23B3866*	.....	.....	.....	.....	.....	400.0	.....	.....	.....	
.....	9T23B3879*	T2H500*	223-3344*	3F3Y500ST*	500T68H†	V48M28T55G*	500.0	65	45	35	

\*Ventilated.

†Ventilated. 2-2½% FCAN and 2-2½% FCBN taps.

flag2

Products shown here are for reference only. They can be sold by the locally authorized distributor.

## TRANSFORMERS

Single Phase  
Special Voltage - Non-Shielded  
Dry Type Power Circuit Distribution



120x240V To 120/240V 60 Hz - No Taps

No.	General		Square D			kVA	Approx. Dim., In.	
	Electric	Hevi-Duty	Sorgel	Westinghouse	H		D	
Cutler-Hammer	9T51B28	HS6F500A	.....	.....	.....	.50	5½	2¾
CX6-00501-710FN	9T51B29	HS6F750A	.....	.....	.....	.75	5¾	2¾
CX6-00701-710FN	9T51B30	HS6F1A	.....	S10N11S01N	.....	1.0	9¾	5¾
CX6-11-710FN	9T51B31	HS6F1.5A	1.5S6F	S10N11S16N	.....	1.5	10½	6½
CX6-0151-710FN	9T51B32	HS6F2A	2S6F	S10N11S02N	.....	2.0	10½	6½
CX6-21-710FN	9T51B33	HS6F3A	3S6F	S10N11S03N	.....	3.0	12¼	7
CX6-31-710FN	9T21B1001G2	HS6F5A	5S6F	S10N11S05N	.....	5.0	17	8¾
CX6-51-710FN	9T21B1002G2	HS6F7.5A	7S6F	S10N11S07N	.....	7.5	17	8¾
CX6-71-710FN	9T21B1003G2	HS6F10A	10S6F	S10N11S10N	.....	10.0	17	8¾
CX6-101-710FN	9T21B9101	S6H15	15S6H	S10N11S25N	.....	15.0	17	10¼
CX6-151-710FN	9T21B9102	S6H25	25S6H	SN10S25N	.....	25.0	28	15
CX6-251-710FN	.....	S6H37	.....	T10N11S37D	.....	37.5	19	11¾
.....	.....	S6H50	.....	T10N11S50D	.....	50.0	34	19

208V To 120/240V 60 Hz - No Taps

No.	General		Square D			kVA	Approx. Dim., In.	
	Electric	Hevi-Duty	Sorgel	Westinghouse	H		D	
Cutler-Hammer	9T51B156	HS7F50A	...	...	...	.75	9¾	5¾
...	9T51B157	HS7F1A	...	...	...	1.0	9¾	5¾
CX6-21-110FN	9T51B157	HS7F1.5A	1.5S7F	...	...	1.5	10½	6½
CX6-31-110FN	9T21B1028G2	HS7F2A	2S7F	S29N11S03N	.....	2.0	10½	6½
CX6-51-110FN	9T21B1029G2	HS7F3A	3S7F	S29N11S05N	.....	3.0	12¼	7
CX6-71-110FN	9T21B1030G2	HS7F5A	5S7F	S29N11S07N	.....	5.0	17	8¾
CX6-101-110FN	9T21B9119	HS7F7.5A	7S7F	S29N11S10N	.....	7.5	17	8¾
CX6-151-110FN	9T21B9120	HS7F10A	10S7F	S29N11S15N	.....	10.0	9¾	5¾
CX6-251-110FN	.....	HS7F15A	15S7H	S29N11S25N	.....	15.0	25	12
.....	.....	HS7F25A	25S7H	.....	.....	25.0	28	15

277V To 120/240V 60 Hz - No Taps

No.	Square D		Westinghouse	kVA	H	Approx. Dim., In.	
	Hevi-Duty	Sorgel				D	
HS9F500A	...	...	...	.50	9¾	8¾	5¾
HS9F750A	...	...	...	.75	9¾	8¾	5¾
HS9F5A	3S8F	S27N11S03N	.....	3.0	12½	10¾	7
HS9F5A	5S8F	S27N11S05N	.....	5.0	17	13¾	8¾
HS9F7.5A	7S8F	S27N11S07N	.....	7.5	17	13¾	8¾
HS9F10A	10S8F	S27N11S10N	.....	10.0	17	13¾	8¾
HS9F15A	15S8H	S27N11S15N	.....	15.0	25	15	12
HS9F25A	25S8H	S27N11S25N	.....	25.0	28	18	15

**TRANSFORMERS**  
 Single Phase  
 Buck - Boost Type, No Taps - 60 Hz.

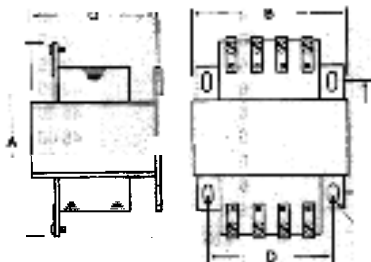


Acme Electric	Cutler-Hammer	General Electric	No.				Square D Sorgel	Westing-house	kVA	Approx. Dim. In.		
			Hevi-Duty	Magnetek/ Jefferson	Siemens/ I-T-E					H	W	D
120x240 To 12/24												
T-1-81047	CX6-00051-730DN	9T51B102	H219A50P19FB50	216-1100	..			.050	5½	3¾	2¾	
T-1-81048	CX6-00101-730DN	9T51B104	HS19A100	246-1101	..			.10	6½	3¾	2¾	
T-1-81049	CX6-00151-730DN	9T51B105	HS19A150	246-1111	..			.15	6¾	3¾	2¾	
T-1-81050	CX6-00251-730FN	9T51B107	HS19A250	216-1121	205BB1224	250SV43F	S10N04A26N	.25	7	4½	3½	
T-1-81051	CX6-00501-730FN	9T51B108	HS19F500A	216-1131	505BB1224	500SV43F	S10N04A51N	.50	9¾	8¾	5¾	
T-1-81052	CX6-00701-730FN	9T51B109	HS19F750A	216-1141	705BB1224	750SV43F	S10N04A76N	.75	9¾	8¾	5¾	
T-1-11683	CX6-11-730FN	9T51B110	HS19F1A	216-1151	18B1224	1S43F	S10N04A01N	1.0	9¾	8¾	5¾	
T-1-11684	CX6-0151-730FN	9T51B111	HS19F1.5A	216-1161	105BB1224	1.5S43F	S10N04A16N	1.5	10½	9¾	6½	
T-1-11685	CX6-21-730FN	9T51B112	HS19F2A	216-1171	28B1224	2S43F	S10N04A02N	2.0	10½	9¾	6½	
T-1-11686	CX6-31-730FN	9T51B113	HS19F3A	216-1181	38B1224	3S43F	S10N04A03N	3.0	12¼	10¾	7	
T-1-11687	CX6-51-730FN	9T21B1037G2	HS19F5A	216-1191	..		S10N04A05N	5.0	17	13¾	8¾	
120x240 To 16/32												
T-1-81054	CX6-00051-740DN	9T51B122	HS20A50	216-1200	..			.050	5½	3¾	2¾	
T-1-81055	CX6-00101-740DN	9T51B124	HS20A100	246-1201	..			.10	6½	3¾	2¾	
T-1-81056	CX6-00151-740DN	9T51B125	HS20A150	246-1211	..	.....		.15	6¾	3¾	2¾	
T-1-81057	CX6-00251-740FN	9T51B127	HS20A250	216-1221	205BB1632	250SV46F	S10N06A26N	.25	7	4½	3½	
T-1-81058	CX6-00501-740FN	9T51B128	HS20F500A	216-1231	505BB1632	500SV46F	S10N06A51N	.50	9¾	8¾	5¾	
T-1-81059	CX6-00701-740FN	9T51B129	HS20F750A	216-1241	705BB1632	750SV46F	S10N06A76N	.75	9¾	8¾	5¾	
T-1-13073	CX6-11-740FN	9T51B130	HS20F1A	216-1251	18B1632	1S46F	S10N06A01N	1.0	9¾	8¾	5¾	
T-1-13074	CX6-0151-740FN	9T51B131	HS20F1.5A	216-1261	105BB1632	1.5S46F	S10N06A16N	1.5	10½	9¾	6½	
T-1-13075	CX6-21-740FN	9T51B132	HS20F2A	216-1271	28B1632	2S46F	S10N06A02N	2.0	10½	9¾	6½	
T-1-13076	CX6-31-740FN	9T51B133	HS20F3A	216-1281	38B1632	3S46F	S10N06A03N	3.0	12¼	10¾	7	
T-1-13077	CX6-51-740FN	9T21B1040G2	HS20F5A	216-1291	..		S10N06A05N	5.0	17	13¾	8¾	

*Our professional staff is ready to assist you in determining the correct Transformer for your particular application. Give them a call today!*

Products shown here are for reference only. They can be sold by the locally authorized distributor

## ACME ELECTRIC Industrial Control Transformers Epoxytran™



Dimensions

Epoxy encapsulation seals coils against dust, dirt, moisture, and other contaminants. High grade silicon steel laminations minimize core losses. Factory mounted fuse clips on the secondary side saves wiring time and panel space. Terminals have 30% greater contact area for low loss connection and are molded into prevent breaking. Terminal screws have full quarter inch of thread to prevent stripping and pull-out. Copper coils for efficient operation. Jumpers are standard. Insulation materials rated for temperature 150°C temperature class with 55°C temperature rise. Mounting brackets are heavy gauge steel for strength and stability. Slotted feet for easy adjustment and mounting. Rating data and wiring diagram contained on nameplate. UL Listed. CSA Certified.

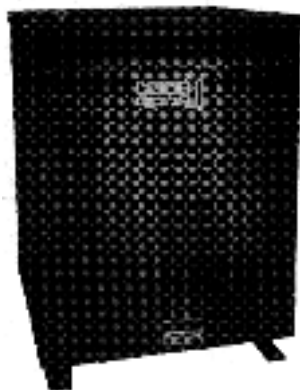
No.	UPC	Rating VA	Output Amps	A In.	B In.	C In.*	D In.	E In.	F In.	Ship. Wt. Lbs.
ET-83320	.....	50	.43	3.00	3.00	2.56	2.50	2.00	.20x.38	2.6
ET-83321	.....	75	.65	3.50	3.00	2.56	2.50	2.50	.20x.38	3.5
ET-83322	.....	100	.87	3.37	3.37	2.87	2.81	2.37	.20x.38	4.2
ET-83323	.....	150	1.30	4.00	3.75	3.18	3.12	2.87	.20x.38	6.7
ET-83324	.....	250	2.17	4.37	4.50	3.81	3.75	2.87	.20x.38	10.0
ET-83325	.....	300	2.61	4.75	4.50	3.81	3.75	3.25	.20x.38	11.3
ET-83326	.....	350	3.04	5.25	4.50	3.81	3.75	3.75	.20x.38	13.6
ET-83327	.....	500	4.35	5.37	5.25	4.75	4.37	4.25	.31x.69	19.2

\*Does not include height of fuse clips. Max. of 1/2".



## GE ED&C - SPECIALTY TRANSFORMERS

Dry Type Transformers  
General Purpose



Pass UL K factor testing program. Shall not exceed rated winding temperature rise at full load and rated K factor. Neutrals capable of handling 200% of rated secondary phase current. Full width copper electrostatic shielding. Effective coupling capacitance 30 pF. Common mode noise attenuation averages 120 dB. Normal mode noise attenuation averages 30 dB. Three-phase, indoor, type QL, 60 Hertz. 480V Δ to 208Y/120V. 2 1/2% taps. UL Listed.

**6 Taps.** 2 above, 4 below rated primary volts

**4 Taps.** 2 above, 2 below rated primary volts.

**K=4 Systems.** For use with 50% connected non-linear electronic loads. Aluminum.

**K=13 Systems.** For use with 100% connected non-linear electronic loads. Copper.

Continued on next page

Continued from previous page

K=4 Transformers

No.	UPC	KVA	Taps	Ht. In.	Wdth. In.	Dpth. In.	Wt. Lbs.
150°C Rise							
9T23Q3461G03		15	6	27.38	19.00	16.57	185
9T23Q3462G03		30	6	32.25	24.00	18.07	275
9T23Q3463G03		45	6	32.25	24.00	18.07	335
9T23Q3464G03		75	6	40.00	32.00	23.69	615
9T23Q3465G03		112.5	6	46.00	35.00	23.69	805
9T23Q3466G03		150	6	48.00	38.50	28.94	1045
9T23Q3467G03		225	6	51.75	42.50	30.25	1385
9T23B3468G03		300	6	58.38	47.50	34.75	1920
9T23B3469G03		500	4	76.00	60.00	50.00	3450
115° Rise							
9T23Q3462G13		15	6	32.25	24.00	18.07	275
9T23Q3463G13		30	6	32.25	24.00	18.07	335
9T23Q1663G13		45	6	35.75	32.00	23.69	475
9T23Q3464G13		75	6	40.00	32.00	23.69	615
9T23Q3465G13		112.5	6	46.00	35.00	23.69	805
9T23Q3466G13		150	6	48.00	38.50	28.94	1045
9T23Q3467G13		225	6	51.75	42.50	30.25	1385
9T23B3468G13		300	6	58.38	47.50	34.75	1920
9T23B3469G13		500	4	76.00	60.00	50.00	3480
80°C Rise							
9T23Q3462G83		15	6	32.25	24.00	18.07	275
9T23Q3463G83		30	6	32.25	24.00	18.07	335
9T23Q1663G83		45	6	35.75	32.00	23.69	475
9T23Q3465G83		75	6	46.00	35.00	23.69	805
9T23Q3466G83		112.5	6	48.00	38.50	28.94	1045
9T23Q3467G83		150	6	51.75	42.50	30.25	1385
9T23B3468G83		225	6	58.38	47.50	34.75	1920
9T23B3469G83		300	4	76.00	60.00	50.00	3480

K=13 Transformers

No.	UPC	kVA	Taps	Ht. In.	Wdth. In.	Dpth. In.	Wt. Lbs.
150°C Rise							
9T23Q9571G03		15	6	32.23	24.03	18.05	300
9T23Q9572G03		30	6	32.23	24.03	18.05	360
9T23Q9573G03		45	6	35.73	32.03	23.68	515
9T23Q9574G03		75	6	39.98	32.03	23.68	675
9T23Q9575G03		112.5	6	45.98	35.03	23.68	865
9T23Q9576G03		150	6	47.98	38.47	28.93	1180
9T23Q9577G03		225	6	51.75	42.50	30.25	1535
9T23C9478G03		300	6	58.38	47.50	34.75	2500
9T23C9479G03		500	4	76.00	60.00	50.00	4650
115°C Rise							
9T23Q9571G13		15	6	32.23	24.03	18.05	300
9T23Q9572G13		30	6	32.23	24.03	18.05	360
9T23Q9573G13		45	6	35.73	32.03	23.68	515
9T23Q9575G13		75	6	45.98	35.03	23.68	865
9T23Q9576G13		112.5	6	47.98	38.47	23.68	1180
9T23Q9576G14		150	6	47.98	38.47	28.93	1180
9T23C9478G13		225	6	58.38	47.50	34.75	2500
9T23C9479G13		300	4	76.00	60.00	50.00	4650
80°C Rise							
9T23Q9571G83		15	6	32.23	24.03	18.05	300
9T23Q9572G83		30	6	32.23	24.03	18.05	360
9T23Q9574G83		45	6	39.98	32.03	23.68	675
9T23Q9575G83		75	6	45.98	35.03	23.68	865
9T23Q9576G83		112.5	6	47.98	38.47	28.93	1180
9T23Q9577G83		150	6	51.75	42.50	30.25	1535
9T23C9479G84		225	6	76.00	60.00	50.00	4650
9T23C9479G83		300	4	76.00	60.00	50.00	4650