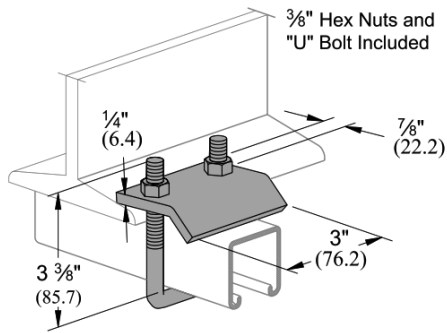


U-BOLT BEAM CLAMPS

KH-158UBBCLMP

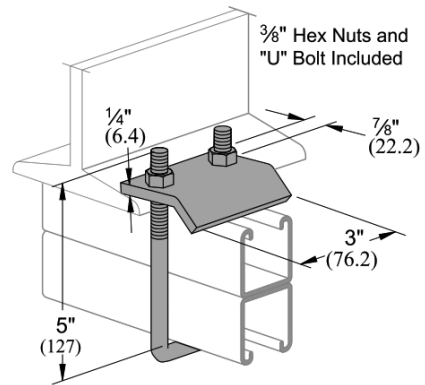


Design Load Each
1000 Lbs (4.4 kN)
Use in Pairs Only

- For use with Beams up to 3/4" (19.1) Flanges and with Channels P1000, P1100, P2000, P3000, P3300, P3301, P4000, P4001, P4100, and P4101.

Wt/C 83 Lbs (37.6 kg)

KH-314UBBCLMP



Design Load Each
1000 Lbs (4.4 kN)
Use in Pairs Only

- For use with Beams up to 3/4" (19.1) Flanges and with Channels P1001, P1101, P2001, P3001, P5000, and P5500.

Wt/C 92 Lbs (41.7 kg)